

Hotel Spa

La solución de confort para el sector.

CÓDIGO 71463

Ideal para **2 personas**

4 posiciones distintas

4 asientos

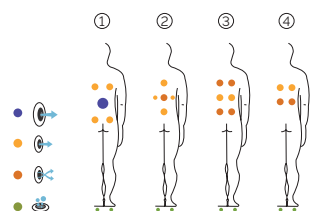
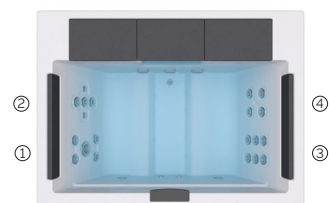
Medidas: 203 x 150 x 72 cm

Volumen de agua: 520 litros

Peso: Vacío 257 kg / Lleno 777 kg

1 colores

4 tipos de masaje



ACABADOS CASCO (COLORES ACRÍLICO)



White

ACABADOS REVESTIMIENTO DEL MUEBLE EXTERIOR



Graphite



Walnut Woodermax



Thunder Woodermax



Butterfly Woodermax

PRESTACIONES



PRESTACIONES OPCIONALES



AQUAVIA SPA

ES

CARACTERÍSTICAS TÉCNICAS

| PRESTACIONES | |
|--------------------------------------|-------------------|
| Jets masaje agua | 20 |
| Reposacabezas | 2 |
| Touch Panel | Estándar |
| Ultraviolet Treatment UV | Estándar |
| Estructura metálica | Estándar |
| Base ABS | Estándar |
| Energy Saving Cover | Estándar |
| EcoSpa | Opcional |
| Nordic Insulation System | Opcional |
| ACABADOS | |
| Colour Sense | 2 LED |
| Jets / Boquillas Inoxidable | Estándar |
| Sin revestimiento | Opcional |
| BOMBAS DE MASAJE | |
| Masaje de agua | 1.850W / 2,5 CV |
| FILTRACIÓN Y CALEFACCIÓN | |
| Bomba de recirculación | 200 W |
| Calentador de agua | 3.000 W |
| Tipo de filtro | Cartucho |
| CORRIENTE ELÉCTRICA | |
| Potencia requerida a 230 V (LOW/AMP) | 3.400 W / 14,6 A |
| Voltaje | 230 V / 400 V III |

Como parte de nuestra política de mejoramiento continuo, nos reservamos el derecho de modificar el diseño y/o especificaciones sin previo aviso.

Hotel Spa

The comfort solution for the sector

CODE 71463

Ideal for 2 people

4 positions

4 seats

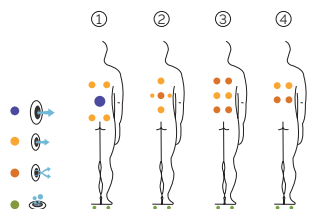
Measures: 203 x 150 x 72 cm

Water capacity (l): 520 liters

Weight: Empty 257 kg / Full 777 kg

1 colors

4 massages



SHELL FINISHES (ACRYLIC COLORS)



White

FURNITURE FINISHES (OUTDOOR CABINET)



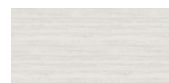
Graphite



Walnut Woodermax



Thunder Woodermax



Butterfly Woodermax

FEATURES



OPTIONAL FEATURES



AQUAVIA SPA

EN

TECHNICAL SPECIFICATIONS

| FEATURES | |
|--------------------------------------|-------------------|
| Massage Jets | 20 |
| Headrests | 2 |
| Touch Panel | Standard |
| Ultraviolet Treatment UV | Standard |
| Metal structure | Standard |
| ABS base | Standard |
| Energy Saving Cover | Standard |
| EcoSpa | Optional |
| Nordic Insulation System | Optional |
| FINISHES | |
| Colour Sense | 2 LED |
| Jets / Stainless Steel Nozzles | Standard |
| Without cabinet | Optional |
| MASSAGE PUMPS | |
| Water massage | 1.850W / 2,5 CV |
| FILTRATION AND HEATING | |
| Recirculation pump | 200 W |
| Water heater | 3.000 W |
| Type of filter | Cartridge |
| POWER SUPPLY | |
| Power requirement to 230 V (LOW/AMP) | 3.400 W / 14,6 A |
| Voltage | 230 V / 400 V III |

According to our policy of constant evolution, we reserve the right to modify the specifications in part or in whole without forewarning.

Hotel Spa

The comfort solution for the sector

CODE 71463

Idéal pour 2 personnes

4 positions

4 assises

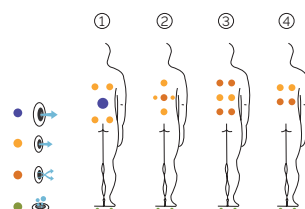
Dimensions: 203 x 150 x 72 cm

Volume Eau: 520 litres

Poids: Vide 257 kg / Plein 777 kg

1 couleurs

4 massages



COULEURS ACRYLIQUE

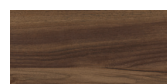


White

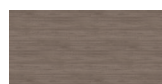
TYPE REVÊTEMENT MEUBLE EXTÉRIEUR



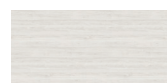
Graphite



Walnut Woodermax



Thunder Woodermax



Butterfly Woodermax

PRESTATIONS



PRESTATIONS OPTIONNELLES



AQUAVIA SPA

FR

CARACTÉRISTIQUES TECHNIQUES

| PRESTATIONS | |
|---------------------------------------|---------------------|
| Jets massage | 20 |
| Appui-tête | 2 |
| Touch Panel | Équipement en série |
| Ultraviolet Treatment UV | Équipement en série |
| Structure Métal | Équipement en série |
| ABS base | Équipement en série |
| Energy Saving Cover | Équipement en série |
| EcoSpa | Option |
| Nordic Insulation System | Option |
| FINITIONS | |
| Colour Sense | 2 LED |
| Buses en acier inoxydable | Équipement en série |
| Sans habillage | Option |
| POMPES DE MASSAGE | |
| Massage d'eau | 1850W / 2,5 CV |
| FILTRATION ET CHAUFFAGE | |
| Pompe de recirculation | 200 W |
| Chauffage d'eau | 3.000 W |
| Type de filtre | Cartouche |
| COURANT ÉLECTRIQUE | |
| Puissance maximale to 230 V (LOW/AMP) | 3.400 W / 14,6 A |
| Tension | 230 V / 400 V III |

Dans le cadre de notre politique d'améliorations constantes, nous nous réservons le droit de modifier/d'amender nos spécifications n'importe quand et sans aucun préavis.

Hotel Spa

Die Komfortlösung für die Industrie

CODE 71463

Ideal für 2 Personen

4 Positionen

4 Sitzen

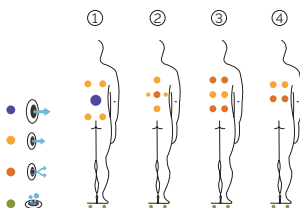
Abmasse: 203 x 150 x 72 cm

Volumen (l): 520 liter

Gewicht: Leer 257 kg / Befüllt 777 kg

1 Farben

4 Massagen



ACRYLFARBEN



White

VERKLEIDUNGSTYP Außenrahmen



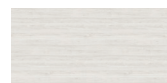
Graphite



Walnut Woodermax



Thunder Woodermax



Butterfly Woodermax

LEISTUNGEN



OPTIONALE LEISTUNGEN



AQUAVIA SPA

DE

AUSSTATTUNG

| LEISTUNGEN | |
|--------------------------------------------------|-------------------|
| Massagedüsen | 20 |
| Kopfstützen | 2 |
| Touch Panel | Serienausstattung |
| Ultraviolet Treatment UV | Serienausstattung |
| Metallrahmen | Serienausstattung |
| ABS-Platte | Serienausstattung |
| Energy Saving Cover | Serienausstattung |
| EcoSpa | Option |
| Nordic Insulation System | Option |
| UNTERHALTUNG | |
| Colour Sense | 2 LED |
| Düsen Edelstahl | Serienausstattung |
| Ohne Rahmen | Option |
| MASSAGEPUMPEN | |
| Wassermassage / Jetpumpe | 1.850W / 2,5 CV |
| FILTER UND HEIZUNG | |
| Silent Pump / Umwälzpumpe | 200 W |
| Wasserehitzer | 3.000 W |
| Filtertyp | Kartuschenfilter |
| ELEKTRISCHE SPANNUNG | |
| Leistung Option niedrige Stromstärke(W)/(A)230 V | 3.400 W / 14,6 A |
| Stromspannung | 230 V / 400 V III |

Im Rahmen unserer Bemühungen um ständige Verbesserungen behalten wir uns das Recht vor, ohne weitere Bekanntmachungen Änderungen an der Konstruktion und den technischen Daten vorzunehmen.

Hotel Spa

La soluzione di comfort per il settore

CODICE 71463

Ideale per **2 persone**

4 posizioni

4 seduto

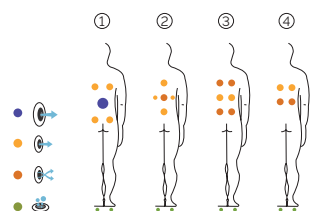
Misure: 203 x 150 x 72 cm

Volume acqua: 520 litri

Peso: Vuota 257 kg / Piena 777 kg

1 colori

4 massaggi



COLORI SUPERFICIE ACRILICA



White

TIPO DI RIVESTIMENTO DEL MOBILE ESTERNO



Graphite



Walnut Woodermax



Thunder Woodermax



Butterfly Woodermax

PRESTAZIONI



PRESTAZIONI ADDIZIONALI



AQUAVIA SPA

IT

CARATTERISTICHE TECNICHE

| PRESTAZIONI | |
|---------------------------------------|--------------------------|
| Getti di massaggio | 20 |
| Poggiatesta | 2 |
| Touch Panel | Equipaggiamento di serie |
| Ultraviolet Treatment UV | Equipaggiamento di serie |
| Struttura metallica | Equipaggiamento di serie |
| Base ABS | Equipaggiamento di serie |
| Energy Saving Cover | Equipaggiamento di serie |
| EcoSpa | Opzionale |
| Nordic Insulation System | Opzionale |
| FINITURE | |
| Colour Sense | 2 LED |
| Jet / Bocchette Inossidabile | Equipaggiamento di serie |
| Senza rivestimento | Opzionale |
| POMPE DI MASSAGGIO | |
| Massaggio ad acqua | 1.850W / 2,5 CV |
| FILTRAGGIO E RISCALDAMENTO | |
| Pompa di ricircolo | 200 W |
| Scaldaacqua | 3.000 W |
| Tipo di filtro | Cartuccia |
| CORRENTE ELETTRICA | |
| Potenza necessaria a 230 V (LOW//AMP) | 3.400 W / 14,6 A |
| Tensione | 230 V / 400 V III |

Come parte della nostra politica di miglioramento continuo, ci riserviamo il diritto di modificare il design e/o le specifiche tecniche senza preavviso.